





Red Lake Watershed District

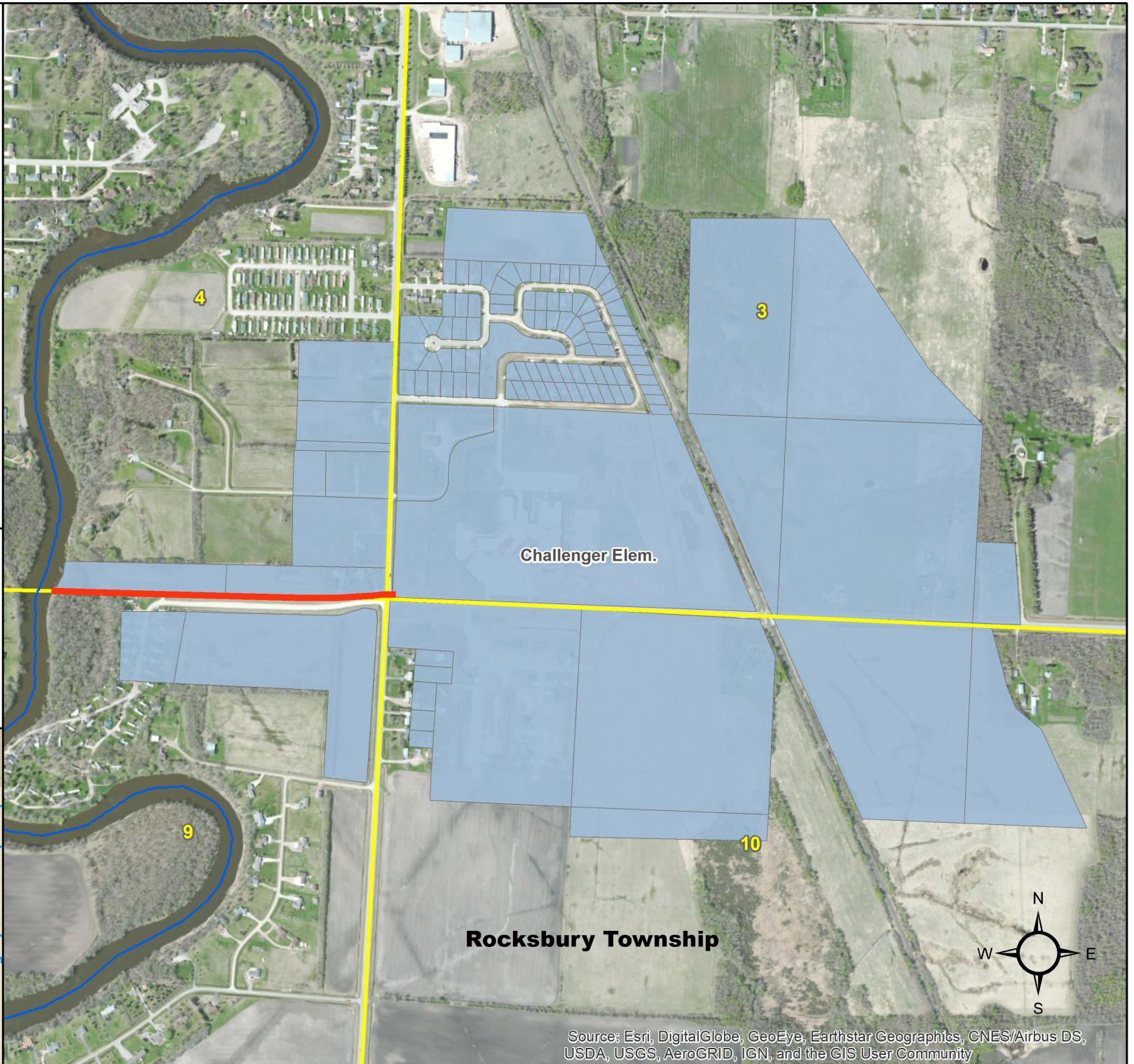


Project 122 Challenger Ditch

Pennington County
Rocksburg Township
T153N. - R43W.

Red Lake River
Subwatershed

-  Project 122
-  Red Lake River
-  Sections
-  Benefitted Area



Source: Esri, DigitalGlobe, GeoEye, Earthstar Geographics, CNES/Airbus DS, USDA, USGS, AeroGRID, IGN, and the GIS User Community