

INTERIOR- GEOLOGICAL SURVEY, RESTON, VIRGINIA- 1977

SECTIONIZED TOWNSHIP

6	5	4	3	2	1
7	8	9	10	11	12
18	17	16	15	14	13
19	20	21	22	23	24

GRID ZONE DESIGNATION:
14U

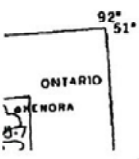
100,000 M. SQUARE IDENTIFICATION

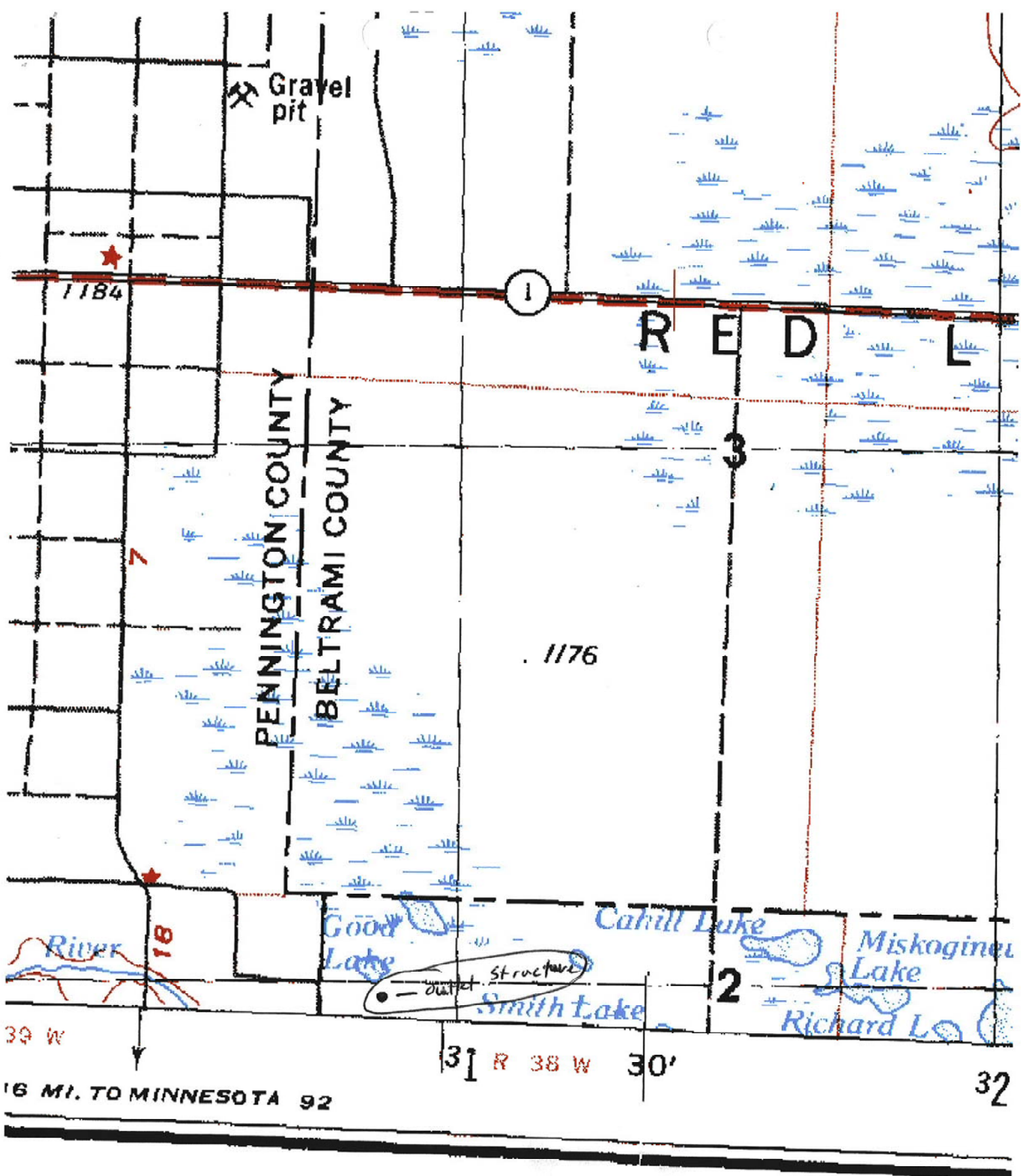
NK	PK	QK
NJ	PJ	QJ

TO GIVE A STANDARD REFERENCE ON THIS SHEET TO NEAREST 1,000 METERS

SAMPLE POINT: GLASSTON

- 1 Read letters identifying 100,000 meter squares in which the point lies.
- 2 Locate first VERTICAL grid line to LEFT of point and read LARGE figure labeling the line either in the top or bottom margin, or on the line itself.
- 3 Estimate tenths from grid line to point.
- 4 Locate first HORIZONTAL grid line BELOW point and read LARGE figure labeling the line either in the left or right margin, or on the line itself.





LEGEND

Figures in red denote approximate distances in miles between star:



1 400 | 31

R 38 W

30'

